

Come and join us for a roundtable discussion with topics like...

- How can you reduce your costs?
- How can you increase your revenues?
- How do I get new ideas in this economy?
- Do you allow internet use in your office?
- Are you finding it more difficult to collect from your patients?

- Sharing valuable information to support each other in running our practices.
- Sharing ideas on patient accounts and discussing the challenges we face.

We will have a relaxed, open discussion of valuable information to support each other in running our practices and sharing ideas and the challenges we face. And come hungry...a delicious hot lunch is always served.

Call the Kane County Medical Society office for more information. (630) 584-6129 or email us at admin@kcmsdocs.org

Kane County Medical Managers

JOIN THE KANE COUNTY MEDICAL MANAGERS TODAY

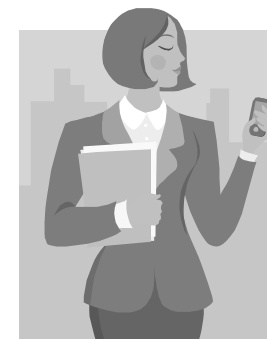
Kane County Medical Society
2320 Dean St., #106
St. Charles, IL 60175

Phone: 630-584-6129
Fax: 630-584-6703
Email: admin@kcmsdocs.org

JOIN THE KANE COUNTY MEDICAL MANAGERS TODAY

How can we help your practice?

Together we learn. Together we succeed. You don't have to do it alone.



Call the Kane County Medical Society at (630) 584-6129 or email: admin@kcmsdocs.org

Benefits to joining the Kane County Medical Managers

Regular medical manager meetings and luncheons giving office staff **valuable information** to support the management of their practice, sharing ideas with other medical manager staff and gaining insight into the challenges of the industry. Cost is only \$75.

Personal attention to your concerns. Many members have over 30 years of experience as practice managers and some have only months. Members are always available to answer your questions or to listen to a concern.

Website section on the Kane County Medical Society page. Information on you and your practice, calendar of events and blog area to pose questions and concerns.

Benefits for your Practice when your physician is a member of the Kane County Medical Society:

Support to member medical managers: educational seminars, members' managers able to speak with ISMS legal counsel and availability of free advice on insurance issues, payment issues, identity theft issues, etc.

Discounted **disability Insurance.**

New **webpage for each physician** on our website "Physician Search" engine at no charge to our members. Can be edited by the physician or office staff.

Benefits (for YOU and YOUR practice) when your physician belongs to the Illinois State Medical Society

Medical Legal Resources

- Members only access to legal counsel
- Members only free access to online medical library: general office documents available (HIPAA, patient discharge letter, etc), medical practice and contracting resources ("before you sign...", record retention, etc.) and medical legal guidelines.
- Health Policy Research and Member Advocacy
- Medical litigation reform
- Medical legal issues
- No-pay, slow pay, overpay and payment recall situations
- Billing, coding and enrollment processes
- Medicare and Medicaid questions
- Audit, peer review and quality assurance issues
- Member only services to improve the business side of your practice

Legislative Advocacy

ISMS lobbying team is the leading state health care advocate

Monitor and improve the regulatory processes

- Influence legislative and regulatory change.

Member Benefit Programs

(Call ISMS for information on these benefit programs (1-800-782-4767, ext. 1470))

The Kane County Medical Managers have listened to your voices, asking for time to network with other practice managers regarding issues we all struggle with, and time to share ideas and solutions. In 2010, our meetings will revolve around interactive roundtable discussions with your peers discussing issues relevant to **YOUR PRACTICE**. Whether you have just started in your position or you are one of our members with 30+ year's experience, we welcome your participation. We can all learn from each other. Please join us for quarterly meetings throughout 2010. Cost to join the Kane County Medical Managers is only \$75. As a member, there is no cost for luncheons.

Name

Position

Practice Name

Address

Email

Phone

Office Fax

Method of Payment

Check

MasterCard

Visa

American Express

Credit Card #

Exp. date

V-Code

Signature

JOIN THE KANE COUNTY MEDICAL MANAGERS TODAY

Kane County Medical Society
2320 Dean St., #106
St. Charles, IL 60175

Phone: 630-584-6129

Fax: 630-584-6703

Email: admin@kcmsdocs.org